

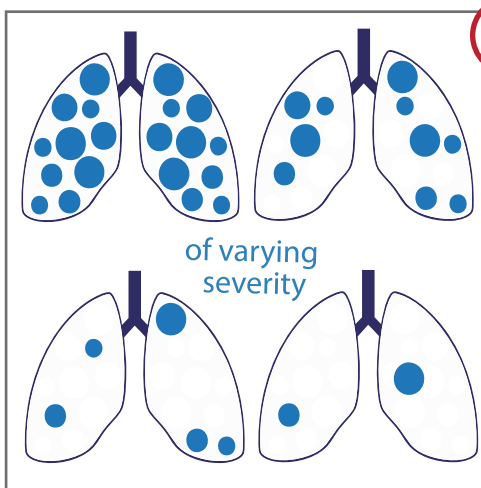
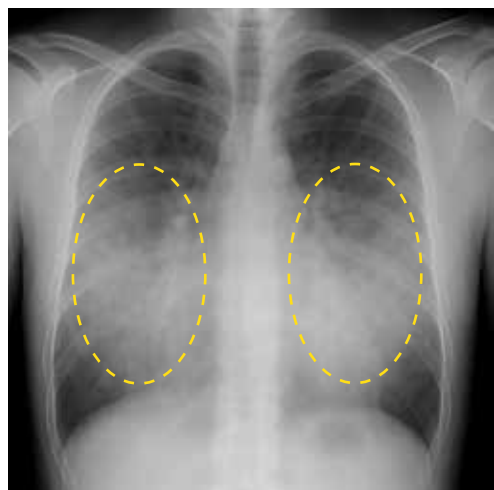
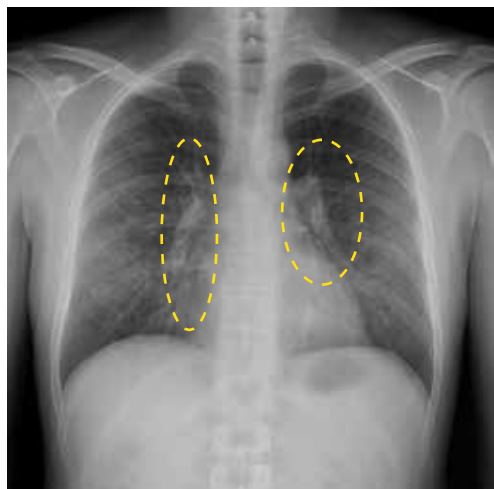
PANTHER

INCLUSION CRITERIA

with guide for **ARDS definition**

Critically ill patients in hospital
and at least 1 of the following:

- a) Acute respiratory distress syndrome (ARDS)
- b) A pandemic associated syndrome (this will be triggered if a new pandemic is declared)



BILATERAL OPACITIES

not fully explained by:

effusions
lobar/lung collapse/atelectasis
nodules

i



RESPIRATORY PATHOLOGY

known acute clinical insult

/

new worsening resp function

ii



RESPIRATORY SUPPORT

invasive / non-invasive:

CPAP

high-flow nasal oxygen $\geq 30L/min$

iii



RESPIRATORY FAILURE

not fully explained by:

cardiac failure
fluid overload
pulmonary embolism
acute airways disease
interstitial lung disease

RATIO's

arterial blood gas $PaO_2/FiO_2 < 40$ kPa

or

Pulse oximetry $SpO_2/FiO_2 < 315$ ($SpO_2 < 97\%$)